

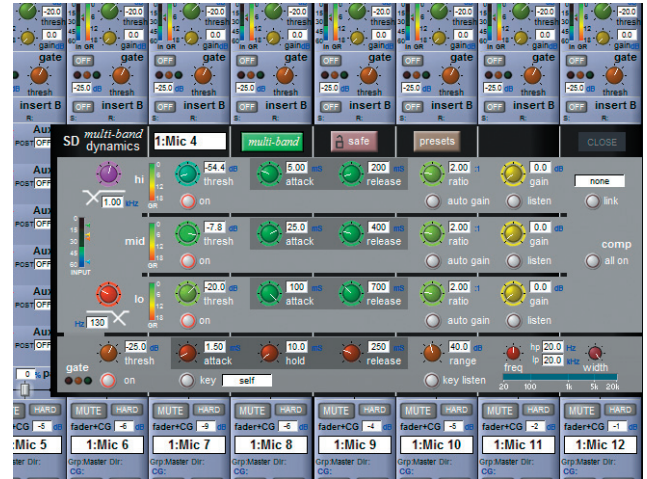
SD7 OVERDRIVE



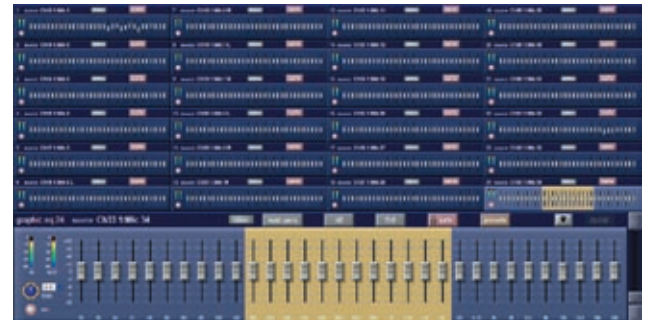
➤ **FX units** 8 stereo FX units have been imported from SD7 MACH2 effects, including the floating-point reverbs and time based FX.



➤ **Dynamic EQ** available on any 8 input or output processing paths, mono or stereo. This is equivalent to 64 Dynamic EQs in DSP processing. These are individually switchable and can be easily monitored via the gain reduction/expansion meter.



➤ **Multi Band Compression** available on any 8 input or output processing paths, mono or stereo. This is equivalent to 48 Multi Band Compressors in DSP processing.



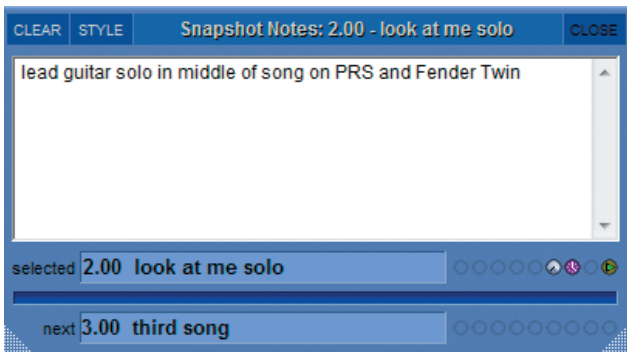
➤ **Graphic EQ** 24 x 32 bands available, an increase from the 12 x 32 bands previously available.



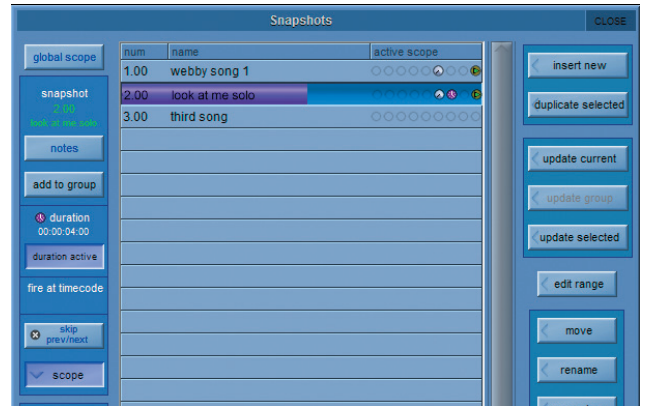
↑ **Matrix** expanded to 16 x 12 from 12 x 12.

channel name	timecode	faders	eq	dynamics	effects	fader	panpot
Input Channels	00:00	02:00	02:15	00:00	00:00	00:00	00:00
1 1.8k 1	00:00	00:00	00:00	00:00	00:00	00:00	00:00
2 1.8k 2	00:00	00:00	00:00	00:00	00:00	00:00	00:00
3 1.8k 3	00:00	00:00	00:00	00:00	00:00	00:00	00:00
4 1.8k 4	00:00	02:00	00:00	00:00	00:00	00:00	00:00
5 1.8k 5	00:00	00:00	00:00	00:00	00:00	00:00	00:00
6 1.8k 6	00:00	00:00	02:15	00:00	00:00	00:00	00:00
7 1.8k 7	00:00	00:00	00:00	00:00	00:00	00:00	00:00
8 1.8k 8	00:00	00:00	00:00	00:00	00:00	00:00	00:00
9 1.8k 9	00:00	00:00	00:00	00:00	00:00	00:00	00:00
10 1.8k 10	00:00	00:00	00:00	00:00	00:00	00:00	00:00
11 1.8k 11	00:00	00:00	00:00	00:00	00:00	00:00	00:00
12 1.8k 12	00:00	00:00	00:00	00:00	00:00	00:00	00:00
13 1.8k 1	00:00	00:00	00:00	00:00	00:00	00:00	00:00
14 1.8k 2	00:00	00:00	00:00	00:00	00:00	00:00	00:00
15 1.8k 3	00:00	00:00	00:00	00:00	00:00	00:00	00:00
16 1.8k 4	00:00	00:00	00:00	00:00	00:00	00:00	00:00
17 1.8k 5	00:00	00:00	00:00	00:00	00:00	00:00	00:00

↑ **Snapshot Scopes and Crossfades** expanded to allow per channel settings and per feature.



↑ **Snapshot List** per snapshot editable text styles for Snapshot names (uses snapshot notes style).



↑ **Snapshot Timing Progress Bar**

num	snapshot name	PLAY	play from	activ	play to	activ	locate to	activ	STOP
1.00	webby song 1		00:00:00:00		00:00:00:00	✓	00:00:00:00		
2.00	look at me solo		00:00:12:00	✓	00:00:48:00	✓	00:00:00:00		
3.00	third song		00:00:00:00		00:00:00:00		00:00:00:00		

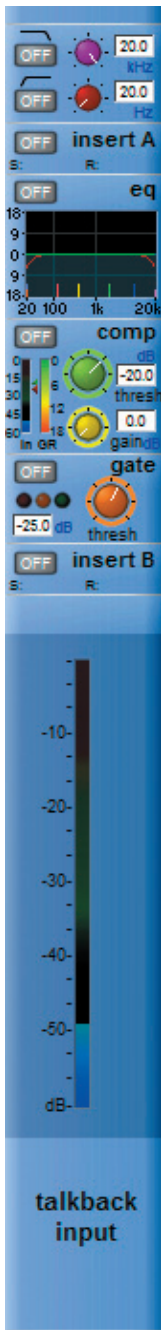
↑ **MIDI Machine Control** this has been implemented to allow Play/Stop and Locate commands to be triggered by Snapshots.



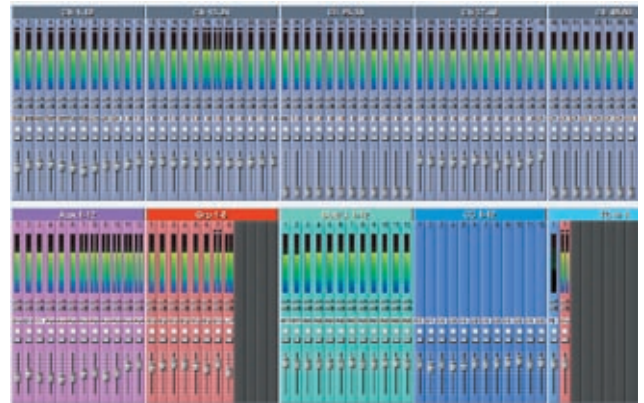
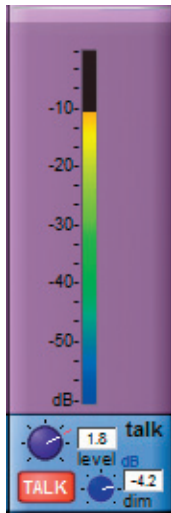
↑ **Assign / Unassign** allows the building of custom fader banks via channel functions on the worksurface.



Optional Stereo or LCR Master Buss



Talkback Channel allows you to talk to any combination of aux busses using a new dedicated talkback channel with talk presets.



Overview screen new options are now available including Disabling Joystick, Prev/Next Buttons and Hard Mute, 2nd Function Auto-Cancel and Larger Meters.

Channel List							
	channel name	input route	insert A	insert B	outputs	preset	layerbank
▲	Input Channels						
1	Kick	1: Mic 1					L: LO B1
2	Snare	1: Mic 2					L: LO B1
3	Hats	1: Mic 3					L: LO B1
4	Tom 1	1: Mic 4					L: LO B1
5	Tom 2	1: Mic 5					L: LO B1
6	Floor Tom	1: Mic 6					L: LO B1
7	Ride	1: Mic 7					L: LO B1
8	Crash	1: Mic 8					L: LO B1
9	OH SR	1: Mic 9					L: LO B1
10	OH SL	1: Mic 10					L: LO B1
11	1: Mic 11	1: Mic 11					L: LO B1
12	1: Mic 12	1: Mic 12					L: LO B1
13	1: Mic 1	1: Mic 1	Graphic 1				R: LO B1
14	1: Mic 2	1: Mic 2	Graphic 2				R: LO B1

Channel List now contains the location of all channels on the surface and indicates channels that are unassigned (not on the surface).

Security Modes											
	channel name	input route	EQ	insert A	insert B	outputs	preset	mute	mute on group	output	
▼	EQack/FD	✓									
▼	1: Kick 1	✓									
▼	1: Snare	✓									
▼	Input Channels	✓	✓	✓	✓	✓	✓	✓	✓	✓	✓
▼	Aux Outputs	✓	✓	✓	✓	✓	✓	✓	✓	✓	✓
▼	Group Outputs	✓	✓	✓	✓	✓	✓	✓	✓	✓	✓
▼	Matrix Inputs	✓	✓	✓	✓	✓	✓	✓	✓	✓	✓
▼	Matrix Outputs	✓	✓	✓	✓	✓	✓	✓	✓	✓	✓
▼	FX	✓									
▼	Graphic EQ	✓									
▼	Control Groups	✓				✓					
▼	Talkback Input	✓				✓					
▼	Talkback Output	✓				✓					
▼	Solo	✓				✓					

Security Modes Unattended and custom Live mode are now available with user definable password protection.